

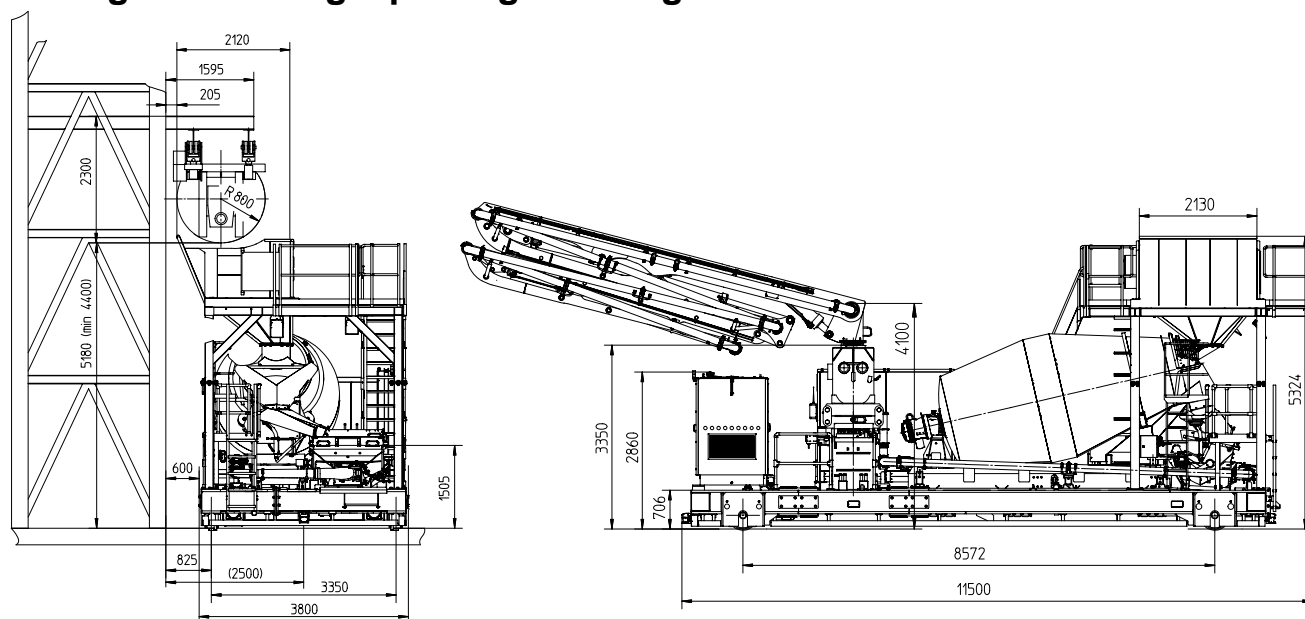
Autocor[®]

24-4.117 H / H LS

24-4.167 H / H LS

Automatic concrete placing on rail

**Mobile concrete distribution unit on rail chassis for pre-fab works
mixing – delivering – placing – dosing**



Note: Standard version. Dimensions depend on boom and base frame. Dimensions in mm
Schematic drawing of bucket conveyor. Safety clearance according to national regulations

Technical data

Boom MX 24		
Horizontal reach	m	24
Unfolding height	m	6.6
End hose length	m	3
Number of arms		4
Folding system	Z fold (Z)	
Delivery line	DN 125 – 5.5"	

Tracks		
Gauge of the track	mm	3350
Contact surface	mm	min. 100

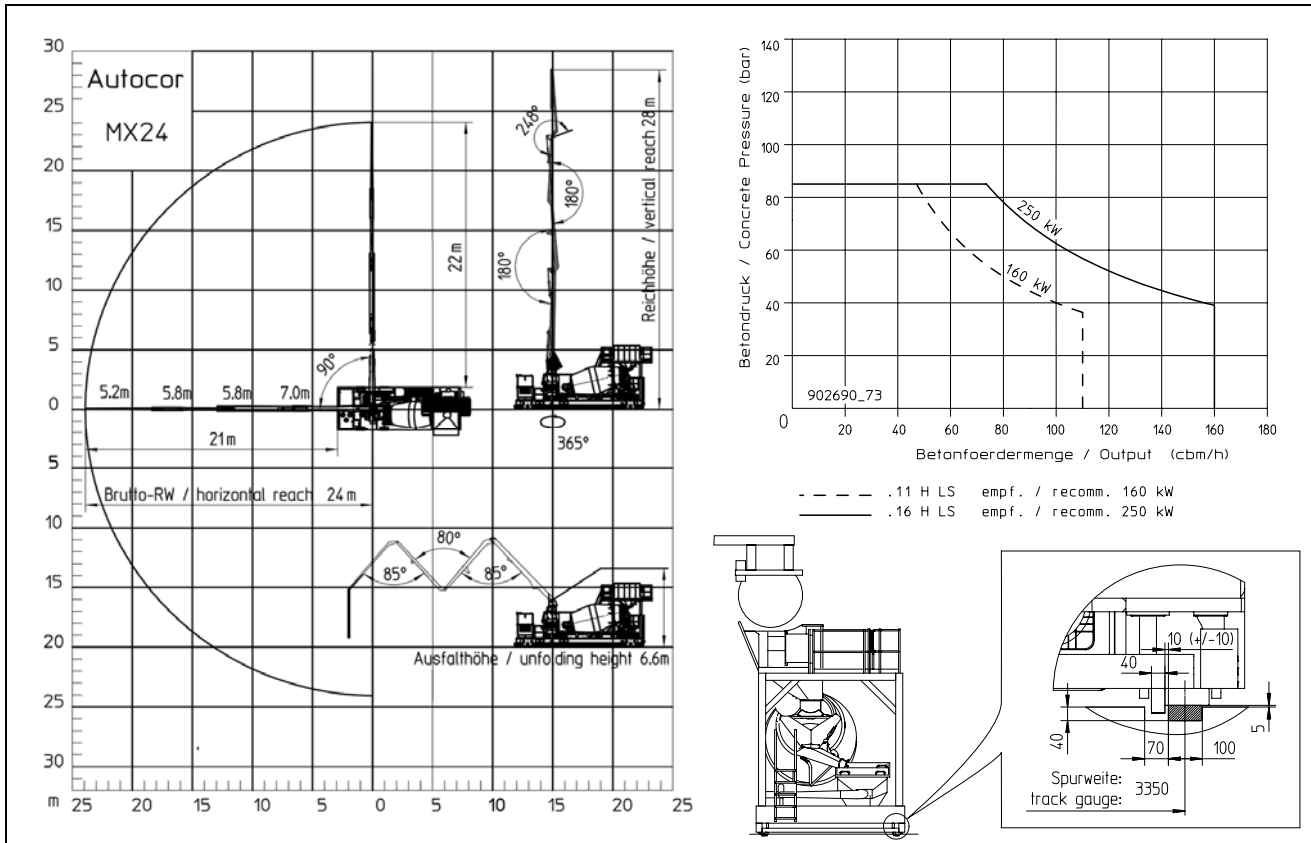
Power supply - Cable drum or bus bar		
Bus bar 400V/50Hz	Typ	V30/100 C-Phase (330A) V30/75 C-PE (280A)

Pump		.11 H	.11 H LS	.16 H	.16 H LS
Output	m ³ /h	110		160	160
Delivery pressure	bar	78	85	85	85
Strokes	1/min	32	27	31	26
Delivery cylinder	∅ mm	230	250	230	250
Stroke	mm	1400	2100	1400	2100
Hopper		RS907L			
Hopper cover		ALU			

Buffer Storage HTM 704 N		
Nominal capacity	m ³	7
Total capacity	m ³	11.5
Drum speed	rpm	0-14
Power consumption	kW	30

Maximum outputs of 110 m³/h or 160 m³/h and maximum concrete pressures of 85 bar may be achieved, but not simultaneously.
All data maximum theoretical.

Reach information diagram, performance diagram, gauge of the track



Delivery scope

Boom

- pedestal RS 850
- placing boom 24 m with 4 arms

Delivery line

- concrete line DN 125 5.5", 133x4
- end hose 3.0 m DN 125 5.5"
- squeeze valve (EQV) and compressor

Pump

- double piston pump .11 H LS or .16 H LS

Buffer Storage

- mixing drum LU 2/7 Liebherr HTM 704 N, 7 m³
- ladder, telescopic, rear platform
- automatic mixer discharge using fill-level sensor

Drive and control

- control cabinet
- drive electro-hydraulic 160 kW (11 H LS) or 250 kW (16 H LS)
- sound proofing doors
- proportional radio remote control for manual use of placing boom and pump, as well as drive of unit
- interface for the integration of the machine control system into the manufacturing process on terminal strip

Illumination

- working light, 2x for illumination pump and buffer storage

Chassis GR 55

- rail chassis, torsion-proof
- drive unit powered on 2 wheels, free-running
- movable via radio remote control, manual control panel or via switch directly at control cabinet

Transfer hopper

- with extended chute (supplied with concrete from bucket conveyor), adapted to the hall situation and safety (optional)

Hopper

- concrete hopper with agitator
- mechanical hopper flap for emptying the concrete hopper

Safety

- agitator with safety switch-off
- emergency shut-down
- safety railings, on both sides
- redundant collision protection control (front and rear) stops the machine when there are obstacles in the way

Extras

- operating Instructions 2x and spare parts lists
- standard accessories
- painting:
 - arm assembly RAL 3020 signal red
 - mixer and pump RAL 1227 chrome yellow
 - different painting on request

Optional extras

- EDP radio data transmission sender/receiver
- sensors for bucket conveyor
- recycling system for starting and ending the concreting process and for cleaning incl. washing unit
- boom central lubrication
- boom EBC control
- concrete line DN 125 5.5", 133x4, Proline 2.5 + 2
- central lubrication for concrete pump
- central lubrication of the bearing rollers for buffer storage
- by-pass filter for hydraulic oil
- hydraulic hopper flap for emptying the concrete hopper

Please see quotation for exact delivery scope.